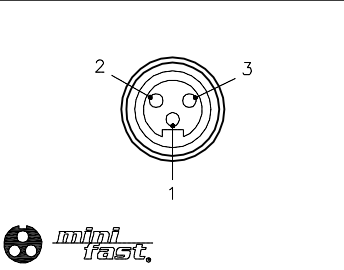
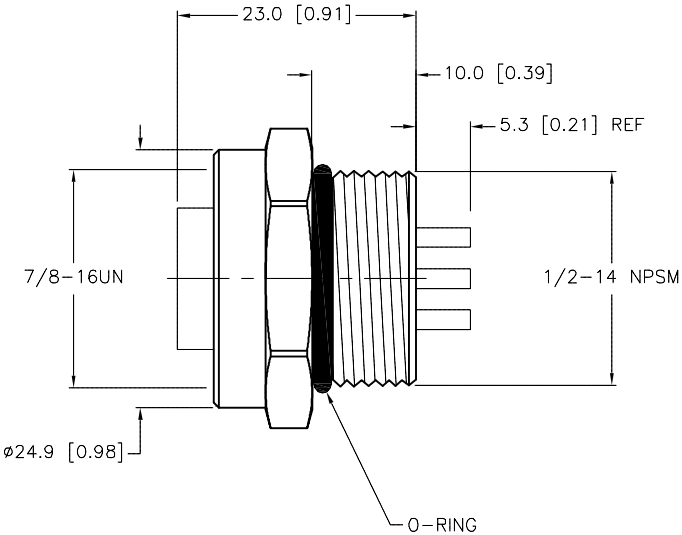
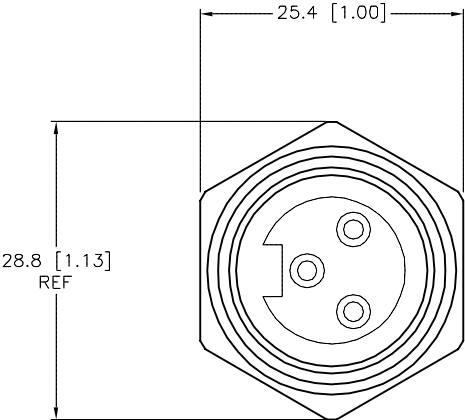


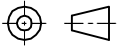
FEMALE END VIEW



SPECIFICATIONS	
CONTACT CARRIER MATERIAL	TPU
CONTACT MATERIAL/PLATING	BRASS/GOLD
HOUSING MATERIAL/FINISH	STAINLESS STEEL/PASSIVATED
O-RING MATERIAL	NITRILE
RATED CURRENT [A]	9.0 A
RATED VOLTAGE [V]	600 V
TERMINATION, SOLDER CUPS	UP TO 16 AWG MAX
TEMPERATURE RANGE	-40°C to +80°C (-40°F to +176°F)
PROTECTION CLASS	MEETS NEMA 1,3,4,6P AND IEC IP67



SOURCE DRAWING - FOR REFERENCE ONLY

RELATED DOCUMENTS 1. 2. 3. 4.					3RD ANGLE PROJECTION 		THIS DRAWING IS CONFIDENTIAL AND THE PROPERTY OF TURCK INC. USE OF THIS DOCUMENT WITHOUT WRITTEN PERMISSION IS PROHIBITED.		<div>TURCK INC High Technology Sensors and Automation Controls</div> <div>3000 CAMPUS DRIVE MINNEAPOLIS, MN 55441 1-800-544-7769 (763) 553-7300 (763) 553-0708 fax turck.com</div>			
					MATERIAL SEE SPECIFICATIONS		DRFT *CK		DATE 10/06/10		DESCRIPTION RKFVL 36	
							APVD		SCALE 1=.8			
					FINISH SEE SPECIFICATIONS		UNIT OF MEASUREMENT MILLIMETER [INCH]		IDENTIFICATION NO. U2392-60		REV B	
CONTACT TURCK FOR MORE INFORMATION					DO NOT SCALE THIS DRAWING		FILE: U2392-60		SHEET 1 OF 1			

B	UPDATE DIMENSION ON RECEPTACLE	RDS	09/26/14	47308
REV	DESCRIPTION	BY	DATE	ECO NO.